

# CRISIS COORDINATOR COMMUNIQUE

Follow us on:



facebook.com/  
kennesawstateOEM



@KSU\_Safety



@KSU\_Safety

## SOCIAL MEDIA



The **Crisis Coordinator  
Communique** is here to  
provide monthly communication  
concerning KSU Crisis  
Coordination, upcoming  
training, and emergency and  
safety tips.

## UPCOMING TRAINING – KENNESAW

### Crisis Coordinator Training

11/10, 12:30pm-4:30pm Clendenin 1009

### Terrorism & CERT

11/4, 8:15a.m.-10:15a.m.,  
Kennesaw Hall Room 1302

### Disaster Psychology

11/4, 10:15a.m.-12:15a.m  
Kennesaw Hall Room 1302

## UPCOMING TRAINING – MARIETTA

### Terrorism & CERT

11/12, 8:30a.m.-12:30p.m.

Joe Mack Wilson Student Center Conf. Room A215

### Disaster Psychology

11/12, 10:30a.m.-12:30p.m.,

Joe Mack Wilson Student Center Conf. Room A215

### Bleeding Control

12/1, 9:00a.m.-11:00a.m.

Joe Mack Wilson Student Center, Room A215

# IMPORTANT DATES

► **Crisis Coordinator Quarterly Meeting**

11/19, 1:00p.m. - 3:00p.m., Prillaman 1105

► **Kristina Anderson -**

**Safety is Personal: Lessons Learned as a Survivor of the Virginia Tech Tragedy**

11/30, 11:00a.m.-12:00p.m., Kennesaw Campus

11/30, 2:00p.m.-3:00p.m., Marietta Campus

Student Center University Rooms

► **Radio Check**

11/4, 10:00a.m.

► **Siren Test**

11/4, 12:00p.m.

**Reminder:**

Remember, your crisis coordinator radio should always be set on emergency, and you should always call police dispatch for an emergency situation.

# STAY SAFE WITH LIVESAFE

## Make a Difference

See something shady? With a few taps, send picture, video and text info to campus police. The tips you send can even be anonymous!

## Safety Information When You Need It

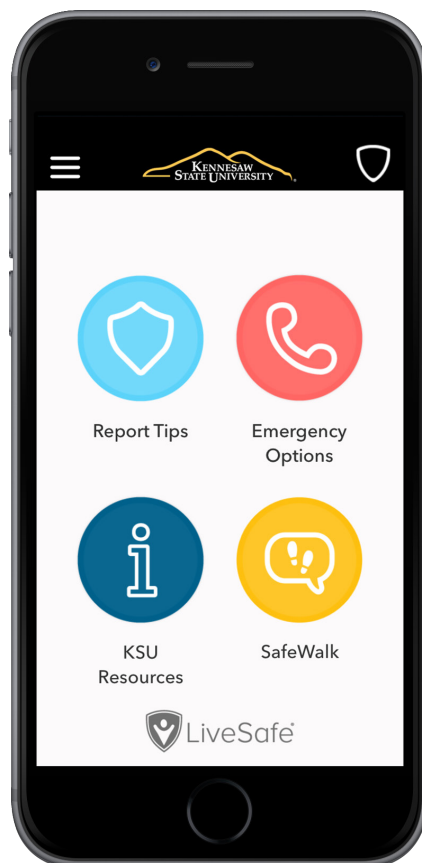
Receive safety broadcasts right on your phone. Access KSU safety resources easily.

## Stay Protected

Call or discreetly chat with campus officials when you need help.

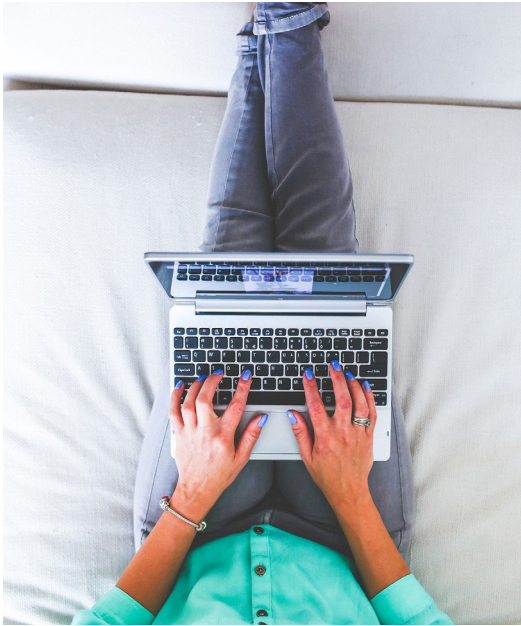
## Peace of Mind

Let LiveSafe be your constant companion. With the SafeWalk button, allow friends and family to walk you home when you need it.



The free LiveSafe app provides students, faculty and staff with a direct connection to campus police so that everyone can easily communicate all their safety needs. Its easy-to-use features help you stay safe every day and enable us to provide better protection for you.

# FEMA ONLINE CLASSES



The Emergency Management Institute (EMI) offers self-paced courses designed for people who have emergency management responsibilities and the general public. <https://training.fema.gov/is/> All are offered free-of-charge to those who qualify for enrollment. Nearly 200 classes are offered! Other EMI and FEMA classes that are offered in the area often require that you have a FEMA Student Identification (SID) Number. You can register for the FEMA SID at <https://cdp.dhs.gov/FEMASID>.

## JOIN TODAY!

Did you know that you do not have to be a Crisis Coordinator to attend our classes? You can attend any class that interests you with no commitment to the Crisis Coordinator program. We can even bring the classes to your group of 10 or more. We offer a variety of special topic courses such as: Weather Safety & Response, General Campus Safety, Students in Conflict, Bomb Threat Management with a K-9 demonstration, Campus Fire Safety, Plan, Prepare, React: Active Shooter Response Options, Basics of Emergency Management, Emergency Response Operations and others. You can also take online classes through FEMA. If you want to learn more about the courses we offer, please email Christy Hendricks (dhendr16) or Ted Stafford (estaffo7). Let us know how we can help your department become more prepared.

### Office of Emergency Management

470-578-6985  
Office Annex, Bldg. 14

Andy Altizer, Director  
[andy\\_altizer@kennesaw.edu](mailto:andy_altizer@kennesaw.edu)

James Westbrook, Assistant Director  
[jwestbr9@kennesaw.edu](mailto:jwestbr9@kennesaw.edu)

Christy Hendricks, Kennesaw Coordinator  
[dhendr16@kennesaw.edu](mailto:dhendr16@kennesaw.edu)

Ted Stafford, Marietta Coordinator  
[estaffo7@kennesaw.edu](mailto:estaffo7@kennesaw.edu)

Bob Williams, Communication Center Manager  
[rwilli47@kennesaw.edu](mailto:rwilli47@kennesaw.edu)

Rachel Chastine, Communications Intern/Editor  
[rchastin@students.kennesaw.edu](mailto:rchastin@students.kennesaw.edu)

KSU Police for Emergencies  
470-578-6666

## CONTACT US